



About AI Soft

AI Soft Technologies Pvt. Ltd. was founded in 1992 with the objective of providing innovative solutions and technology services that delivers measurable results. AI Soft provides a seamless approach to business, technology, and professional services by combining in execution with continuous innovation to help clients effectively compete in knowledge Era.

With its Head Office at Bangalore, known as the silicon valley of India, It has Alliance Partners at Melbourne (Australia) and Kuala Lumpur (Malaysia) and wide client list spread across the globe i.e. India, Hong Kong, Singapore, UK, Germany, USA, Australia, and Middle East.

AI Soft has from day one, adopted a dynamic approach towards market penetration, which allows it to explore various options in order to get a proper foothold. In order to maximize both technical capabilities and enhance market reach, AI Soft has executed a number of strategic business alliances with professional organization.



Vision

For us at AI Soft, we know who we are based on our vision - which includes our values, purpose, mission and strategy. In other words, our vision defines us.

For example, when we talk about AI Soft's values, we use words like "Integrity, Commitment, Accountability, Competency and Excellence."

Mission

Our Mission is to provide quality service, building long-term relationships, dealing with our clients honestly and openly, and making every possible effort to provide them with the best service and information.



Management Team

Mr.M.Jayaraman, founder and visionary, of AI Soft has in-depth technical knowledge of the latest developments in software and has undertaken a variety of projects both within the country and abroad. He has more than 25 years of experience in the IT field.

Mr.C.L.Viswanath formerly Director at NGEF, a large Electrical Equipment Manufacturing Co. with German collaboration. He has a wide exposure in coordinating several in company computerization programs especially in ERP related areas.

Prof.M.K.Bannerjee, formerly a professor at the **Indian Institute of Management**, Bangalore and specialized in Materials, Production and Finance Management. Presently, he is a reputed consultant in the IT industry.

Mr.S.K.Rao has more than 12 years of experience in designing and supporting high-end solutions. He currently heads the Internet and e-commerce center and is also the CTO.

Mr. Shawn D'Souza (General Manager - Projects) has over 7 years of enterprise implementation and project management experience. He has worked with leading clients like IBM, Proctor and Gamble, Lufthansa, Telekom Malaysia.

Mr. M.R.Saktiya Narayanan (Project Manager) has over 12 years of development and Management experience. He has worked with leading clients at Europe like NATWEST , God Invest and Net Account (Norway)



A I Soft Today

- Present staff of 65 technical personnel to increase to 200 in next one year
- One third of staff are consultants/system analysts with business knowledge and good analytical skills
- Over 600 man years of experience available in house
- Enterprise wide solution skills
- Wide industry exposure



Best Practices

- Process management
- Project management
- Group-wise metrics reports
- Senior management reports
- Use of effective tools to facilitate software development, assist in better communication and effective tracking between the offshore and the onsite personnel and the customer's team.
- Use of effective technology framework to reduce development time
- Knowledge management



Technology

- Web based development
- Client/ Server
- Databases
- Component
- Application Servers
- B2B Tools
- Multimedia
- Mainframe
- Microsoft based tools
- J2EE



Customer Requirements

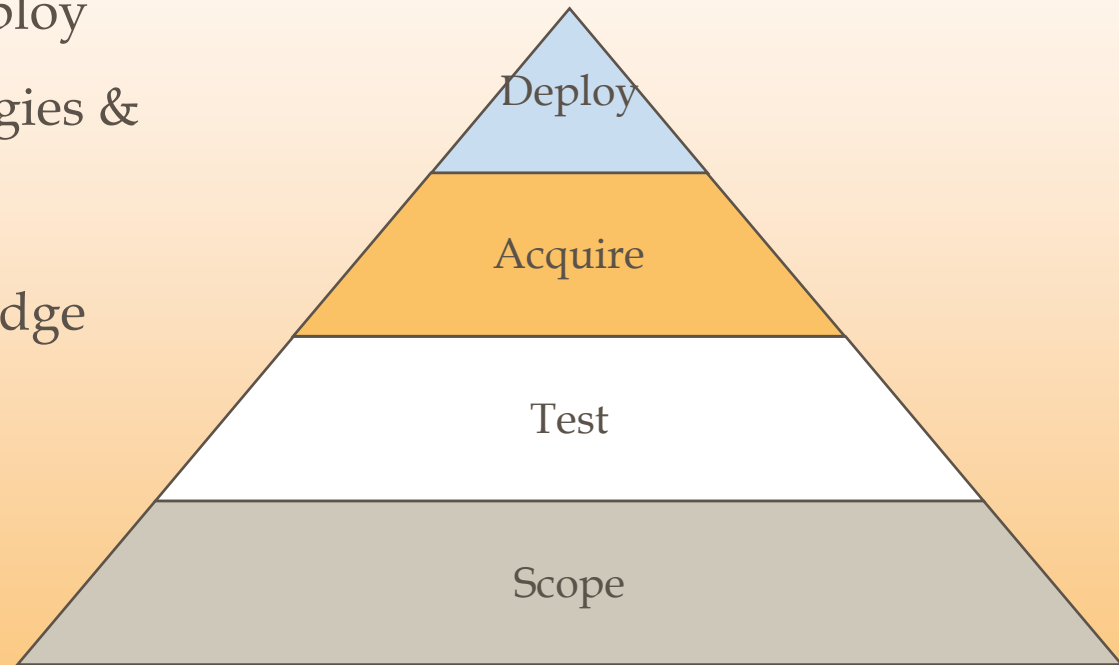


- Customers need 'guaranteed' solutions not experiments
- Customers need economy, effectiveness, easy maintainability and least cost of ownership



Meeting the Needs

- Absorb, prove and deploy the best in IT technologies & practices
- Build in depth knowledge and own the solution
- Recommend
- Hand Hold
- Deploy



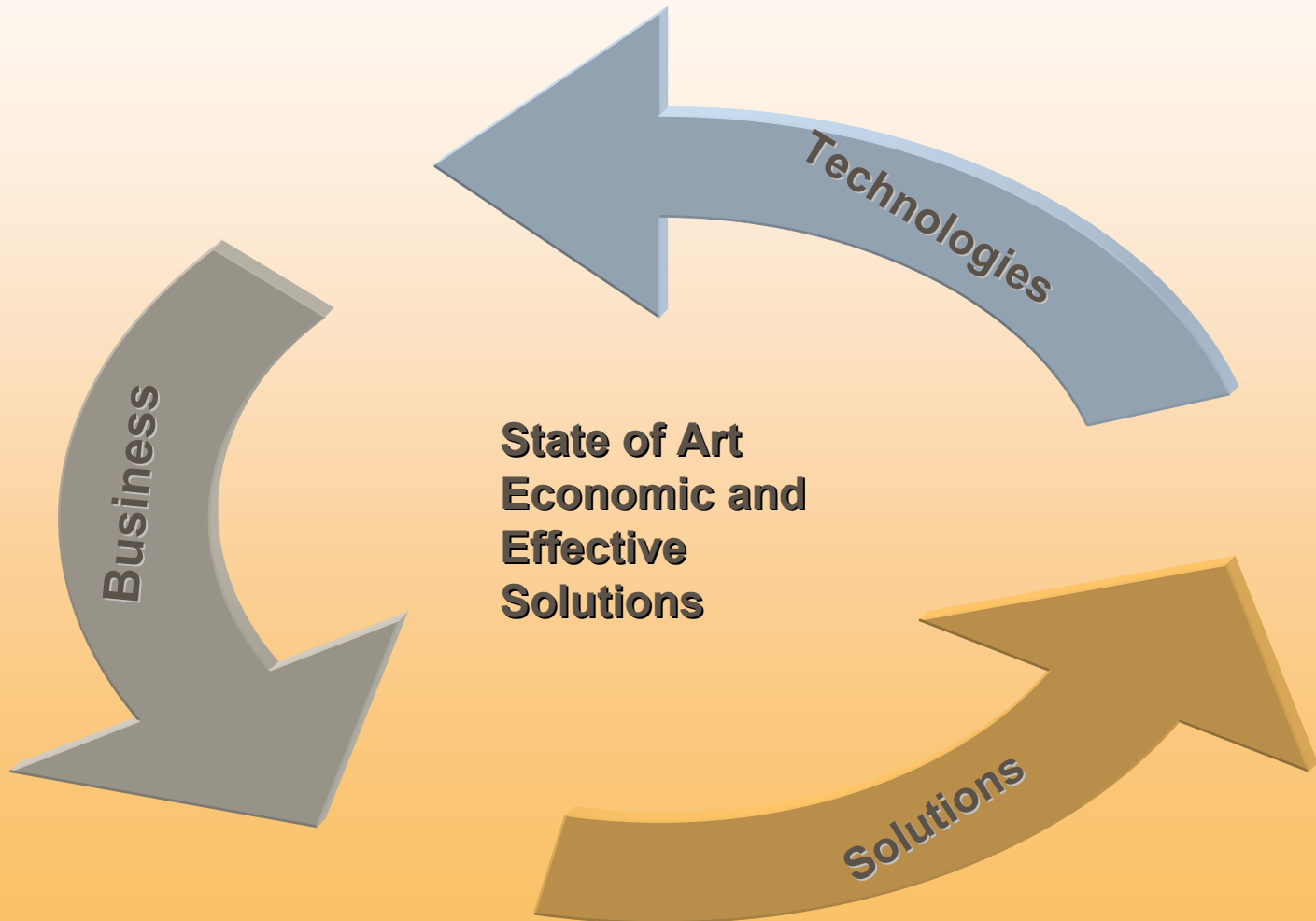


Key Benefits

- You get exactly the deliverables you want
- Suit the technology to your business model
- Planned and Managed I T roadmap
- Leverage existing investments
- Value for Money



Our Strengths





Focus Areas

- Air Industry
- Banking Solutions
- ERP
- Office Automation System
- CRM
- SCM



Presentation about SCM Frame work

Contents

- Trackware SCM Suite
- Enterprise Wide Solution
- Modules
- Overview
- Data Flow Diagram
- Network Architecture
- Hardware Requirement



TrackWare[®] SCM Suite

- Tapping The Potential of ICT



TrackWare® SCM Suite Basic Structure

Enterprise-wide Solution

- Multi-company
- Multi-branch
- Multi-warehouse
- Multi-Principal
- Multi-Product Types
 - Edibles
 - Pharmaceuticals
 - Apparel/Footwear
 - Office equipment
 - FMCG



TrackWare® SCM Suite System Modules

Warehousing

- Space and time management
 - ✓ Pick up and put away algorithms
 - ✓ Least movement based
 - ✓ Least space based
 - ✓ User defined
- Interfaces
 - ✓ Bar coding and mobile devices

Inventory Management

Stock Movements
Quality Check
Stock takes
Online status updates
Batch & Serial Tracking
Stocking patterns
Alerts
Track & Trace

Logistics

Transport Planning
Track & Trace
Optimization
Analysis

Billing

Principals
End-customers



TrackWare® SCM Suite
System Modules

Information Exchange

Online Web Interfaces for
Principals
Customers

Accounts

GL
AR
AP
Cash Book
Analytical reports

Exchanges via

Online Enquiries
EDI Transfers
XML Exchanges
Flat Files
Reports
Direct Database
Updates



TrackWare® SCM Suite Overview

Trackfin

Information Exchange Trackmessage	Customer Quotes & Contracts			<div style="color: red; font-weight: bold; font-size: 1.2em;">AR</div> <div style="color: red; font-weight: bold; font-size: 1.2em;">Customer Billing</div> <div style="color: red; font-weight: bold; font-size: 1.2em;">GL</div> <div style="color: red; font-weight: bold; font-size: 1.2em;">Supplier Billing</div> <div style="color: red; font-weight: bold; font-size: 1.2em;">AP</div>	
<div style="color: blue; font-weight: bold; font-size: 1.2em;">Track & Trace</div> <div style="color: blue; font-weight: bold; font-size: 1.2em;">TrackWeb</div>	Booking & Scheduling				
	Internal Services				
	Inland Transport Conventional Container Trackdesk	Freight Forwarding TrackAir TrackSea	Enterprise Asset Mgt		
	Warehouse System (Trackware)				
	Contract Admin.	Receival Inventory Management Relocation	Stuffing/ Unstuffing		Transfers Returns
	Customs Decln.	Unpacking/Repacking	Kitting/Dekitting		
	3 rd Party Services				
	Inland Transport Conventional Container Rail	Freight Forwarding Air Sea	Fleet Management		
Booking & Scheduling					
Information Exchange	Partner Quotes & Contracts				



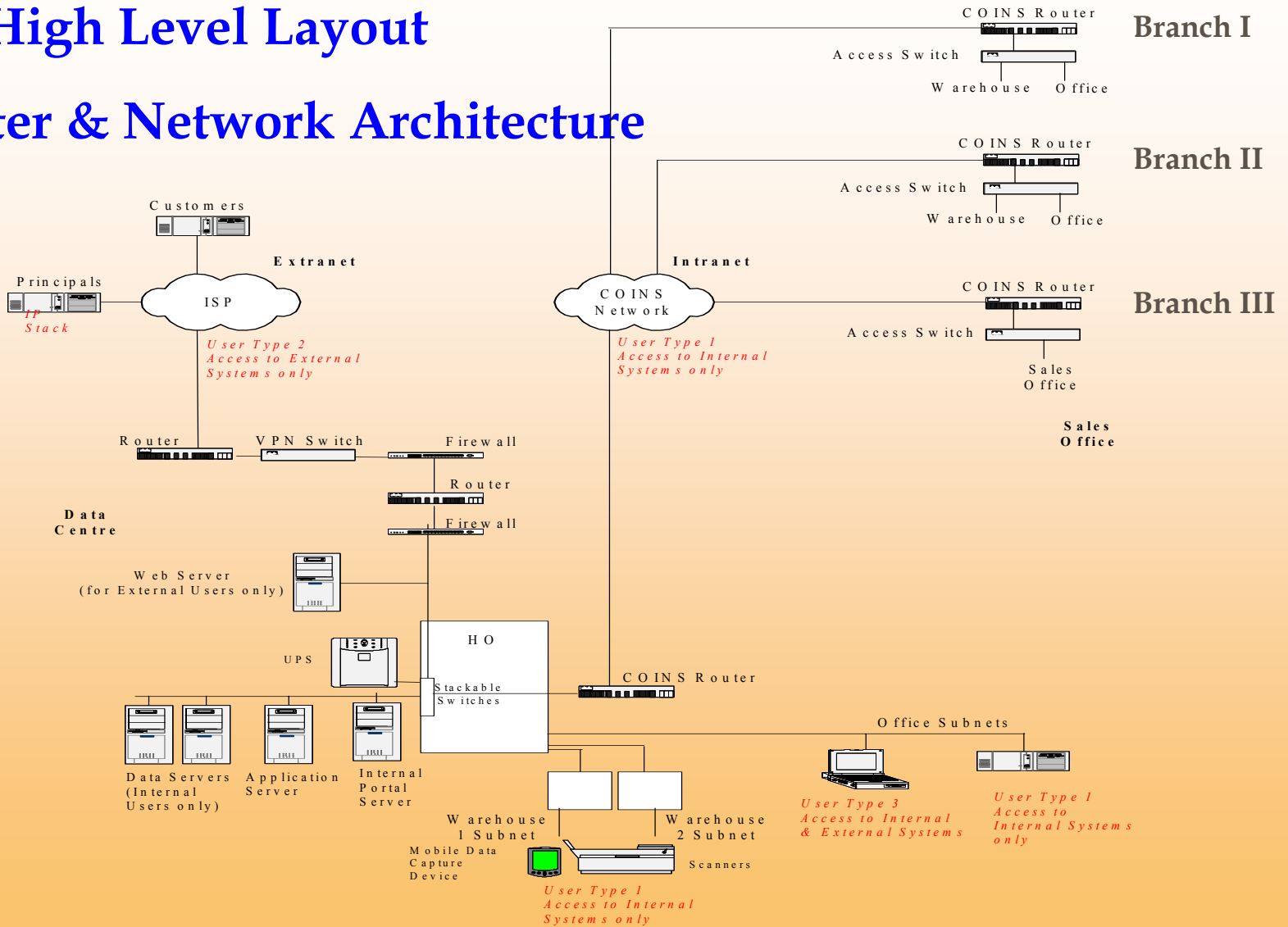
TrackWare® SCM Suite System Basics

- The core of the system consists of one time set-ups for the management and handling of the entire application
- Consists of masters to handle
 - Principals
 - Warehouses
 - Products
 - Companies
 - Customers



High Level Layout

Data Center & Network Architecture





Hardware Requirements

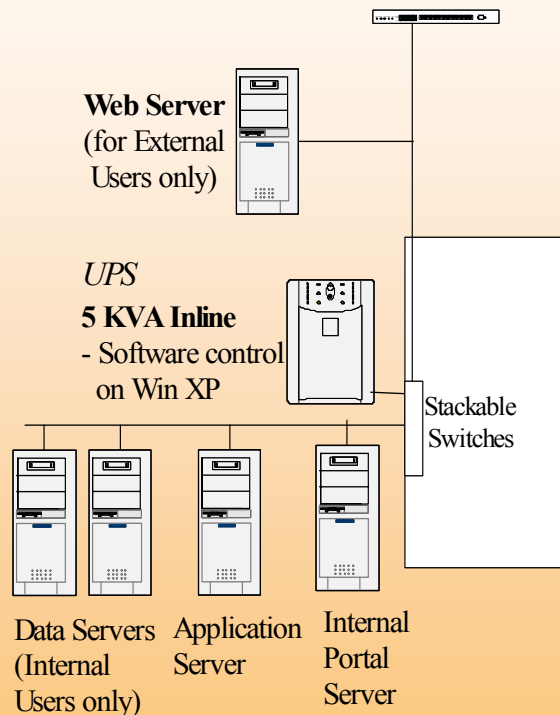
Data Servers (2) Configurations

1 x Intel Xeon 2 way min 1.5 GHz
 - 1 GB RAM
 - 40 GB x 4 HDD
 - INline RAID 5 Support
 - Intel Server Architecture
Omega 500 MB backup disk system
Windows XP/2000 Advanced server
SQL Server 2000 with
 - 10 Client Access Licences
 - Auto replication Kit

1 x Intel Xeon 2 way min 1.5 GHz
 - 1 GB RAM
 - 40 GB x 4 HDD
 - INline RAID 5 Support
 - Intel Server Architecture
 - Intel Server Architecture
Windows XP/2000 Advanced server
SQL Server 2000 with
 - 10 Client Access Licences
 - Auto replication Kit

Firewall (1) Configuration

1 x Intel Pentium 4
 - 256 RAM
 - 40 GB x 1 HDD
Linux 2.4x
 - Inbuilt Mandrake Firewall



Application Server (1) Configuration

1 x Intel Xeon 2 way min 1.5 GHz
 - 1 GB RAM
 - 40 GB x 4 HDD
 - Intel Server Architecture
Windows XP/2000 Advanced server
IIS 5x
XP VPN Support
Crystal Web data Reports

Internal Portal Server (1) Configuration

1 x Intel Pentium 4
 - 512 RAM
 - 40 GB x 1 HDD
Linux 2.4x
 - Mail & Portal

Web Server (1) Configuration

1 x Intel Xeon 1 way min 1.5 GHz
 - 512 MB RAM
 - 40 GB x 2 HDD
 - Intel Server Architecture
Windows XP/2000 Advanced server
IIS 5x

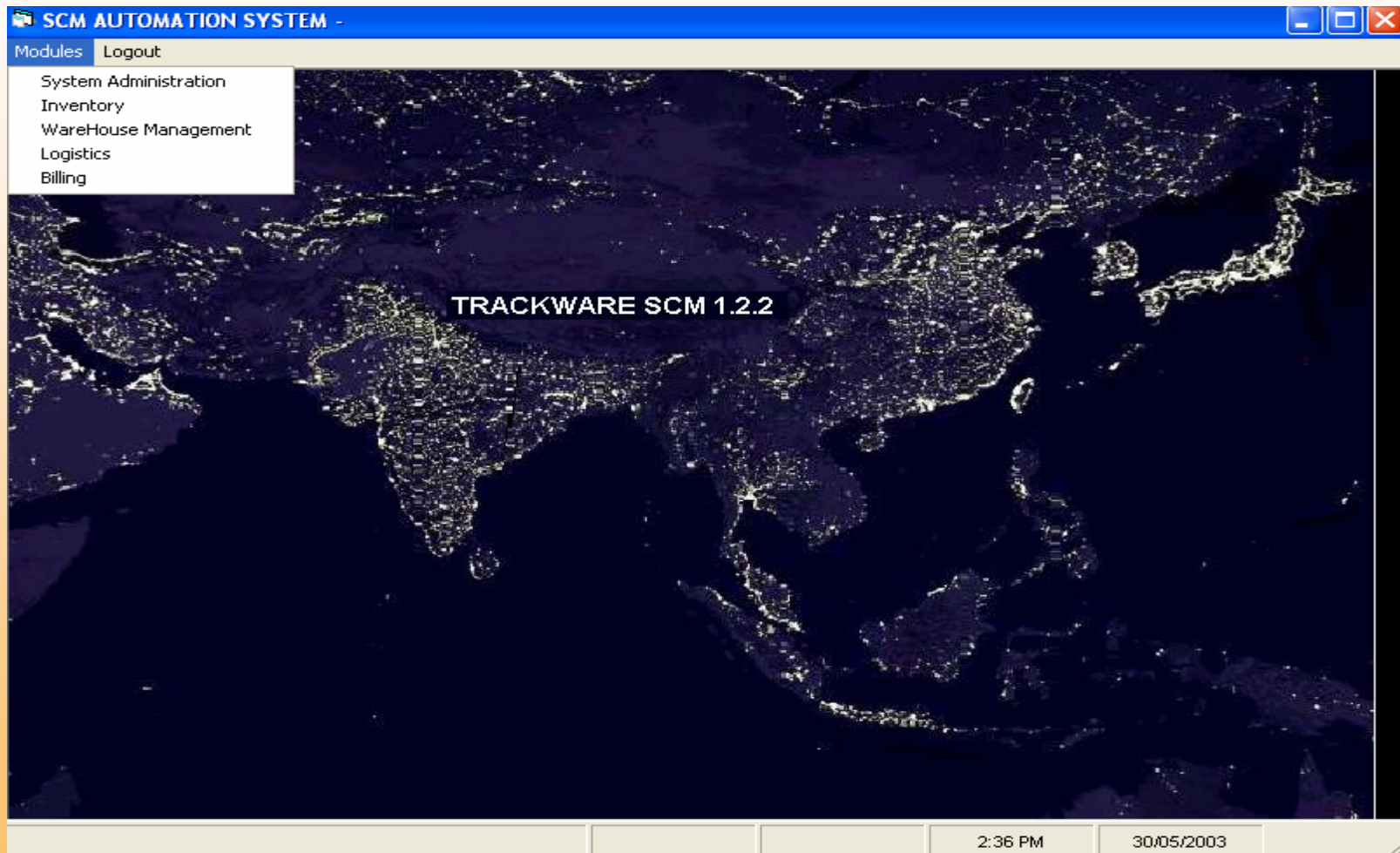


SCM Screen Shots

- ✓ Dynamic Menu
- ✓ Warehouse
- ✓ Product Master
- ✓ Principal Master
- ✓ Advance Supply Note
- ✓ Goods Receipt Note
- ✓ Delivery Order
- ✓ Billing
- ✓ Stock Report
- ✓ Warehouse Utilization Report



Dynamic Menu



Product Master

SCM AUTOMATION SYSTEM - INVENTORY SCM ORCHID NETWORKS JAKARTA WAREHOUSE

PRODUCT MASTER

PRODUCT MASTER

Product Master Principal Instruction Kitting

Principal Product Code: 1005 List of Items: [] Unit Price: 14.99

Internal Product Code: PRC05 Tag Each: [] Unit Cost: 14.99

Product Description: BIO WALNUT Alternate Product: PRC06 ABC Class: ABC

Category: GENERAL Def Handling UOM: NUMBER Order Quantity: 100

Product Type: COMPONENT Def Reporting UOM: NUMBER Min Order Quantity: 700

Selection Method: FIFO LIFO FEFO LEFO

Def Pick/Put UOM: NUMBER Shelf Life: 180

Def Ordering UOM: NUMBER Introduction Date: 05/01/2003

Attribute Name	Data Type	Table Name	Field Name	Display Type	Product Code	Mandatory
CAPACITY	NUMERIC			TEXT	PRC05	False
TREATMENT FOR	TEXT			COMBO	PRC05	True
PRODUCT TYPE	TEXT			COMBO	PRC05	False
STORAGE CONDITION	TEXT			COMBO	PRC05	True

Add Update Delete Refresh Close

SCM 2:42 PM 30/05/2003



Principal Master

SCM AUTOMATION SYSTEM - SYSTEM ADMIN SCM ORCHID NETWORKS JAKARTA WAREHOUSE

Modules House Keeping Window Help Logout

Principal Master

PRINCIPAL INFORMATION

The Body Shop

THE BODY SHOP

Principal Information Commercial Terms Services **Technical** System Customization

TECHNICAL

URL **FTP URL**

User Id **Email ID**

Password **Sales Email ID**

FTP User Id **Support Email ID**

FTP Password

Report Format

- Web Interface
- XML Interface
- EDI
- Text Reports

Logo

- Yes
- No

Notification by e-Mail

- ASII - Acceptance
- GPII
- Third Party QC Details
- GRII
- Stock Status
- Delivery Note

SCM 3:58 PM 30/05/2003

Advance Supply Note

SCM AUTOMATION SYSTEM - INVENTORY SCM ORCHID NETWORKS JAKARTA WAREHOUSE

Modules Master Transactions Report Window Help Logout

Advance Supply Note

Biotique
 Jl. Arteri Pondok indah Kav. 8L-M

ADVANCE SUPPLY NOTE

ASII No: ASII Date: Ref No:

ORIGIN

Name:

PICK UP INFORMATION

Location:
 Address:
 Date: Time:

Note:

Lx No	PROD CODE	DESCRIPTION	ORDER QTY	RATE	UOM
01	PRC27	MINIATURE TRAVEL COLLEC	5	24.99	NUM
02	PRC21	BIO APPLE	8	13.99	NUM
03	PRC05	BIO WALNUT	3	14.99	NUM

Lx No	ATTR CODE	ATTR VALUE
01	CAPACITY	245ML
01	TREATMENT FC	COMPLETE
01	PRODUCT TYPE	ALL
01	STORAGE CON	REGULAR

Next >>

SCM 2:43 PM 30/05/2003

Goods Receipt Note

SCM AUTOMATION SYSTEM - INVENTORY SCM ORCHID NETWORKS JAKARTA WAREHOUSE

Modules Master Transactions Report Window Help Logout

Goods Receipt Note

ORCHID NETWORKS

GOODS RECEIPT NOTE

GRII No. GRN05 **GRII Date** 05/01/2003 **ASII No** ORD05

GPII No GPN05 **Carrier** ABC LOGISTICS

Principal Biotique **Vehicle No.**

PT. Arliscoputra Hantama

Delivery Challan No DN05

Checked By CHAN **Approved By**

Remarks

LX NO	PROD CODE	DESCRIPTION	ORDER QTY	RATE	UOM
01	PRC27	MINIATURE TRAVEL COLLECT	5	24.99	NUM
02	PRC21	BIO APPLE	8	13.99	NUM
03	PRC05	BIO WALNUT	3	14.99	NUM

LX NO	ATTR CODE	ATTR VALUE
01	CAPACITY	245ML
01	TREATMENT FC	COMPLETE
01	PRODUCT TYPE	ALL
01	STORAGE CON	REGULAR

SCM 2:43 PM 30/05/2003



Goods Delivery Note

SCM AUTOMATION SYSTEM - INVENTORY SCM ORCHID NETWORKS JAKARTA WAREHOUSE

Modules Master Transactions Report Window Help Logout

Goods Delivery Note

The Body Shop

GOODS DELIVERY NOTE

GDH No. GDH Date Order No.

Customer Name Reference No.
 Address Carrier
 Veh No.

LX HO	PROD CODE	DESCRIPTION	ORDER QTY	RATE	UOM	LX HO	ATTR CODE	ATTR VALUE
▶ 01	PRC16	ICE BLUE SHAMPOO	10	50	NUM	▶ 01	CAPACITY	60ML
						01	TREATMENT	HAIR
						01	PRODUCT TY	SHAMPOO
						01	STORAGE C	REGULAR

SCM 4:02 PM 30/05/2003



Billing


SCM AUTOMATION SYSTEM - BILLING SCM ORCHID NETWORKS JAKARTA WAREHOUSE

Modules Transactions Report Window Help Logout

Invoice

Biotique

PT. Arliscoputra Hantama
Jl. Arteri Pondok Indah Kav. 8L-M



INVOICE

Party Name	Antares Prima - Turen Malang(Biotique)	Delivery Ilo	DN05	Invoice No	INV04
Address	Jl SUTOYO No. 55 SELATAN	Reference Ilo	RN05	Date	1/21/2003

LX NO	PROD CODE	DESCRIPTION	ORDER QTY	RATE	UOM	VALUE
01	PRC27	MINIATURE TRAVEL COLLECTION	25	25	NUM	625
02	PRC21	BIO APPLE	20	13	NUM	260
03	PRC05	BIO WALNUT	35	14	NUM	490

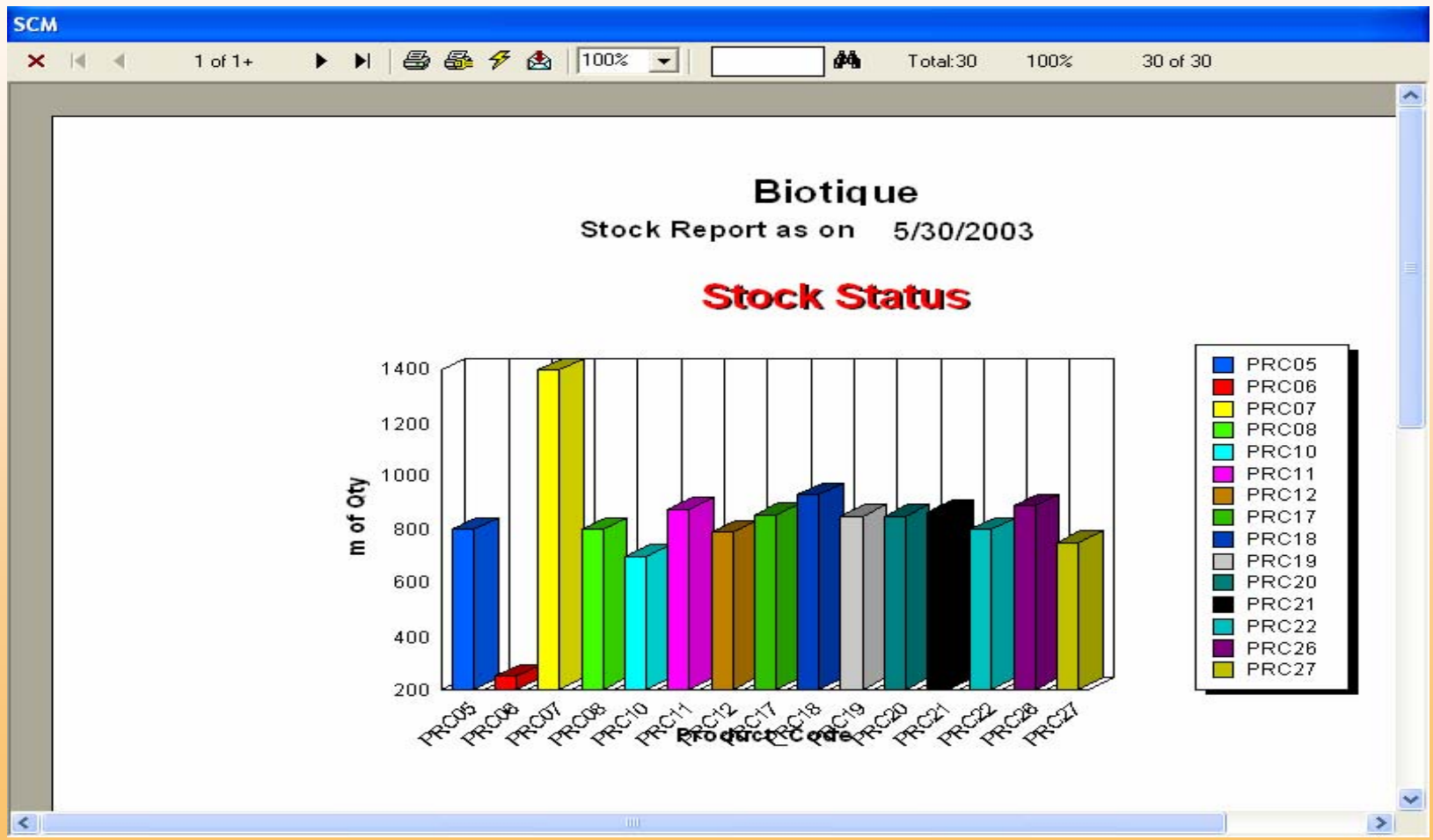
Payment Terms Without written notice, invoice will be assumed to be correct and accepted after 10 days.

ST	7	Excise Duty	15	Gross	1375
Volume Discount		Discount	138	Net	1259
Amount in Words	Twelve Hundred and Fifty Nine				

SCM 3:11 PM 30/05/2003

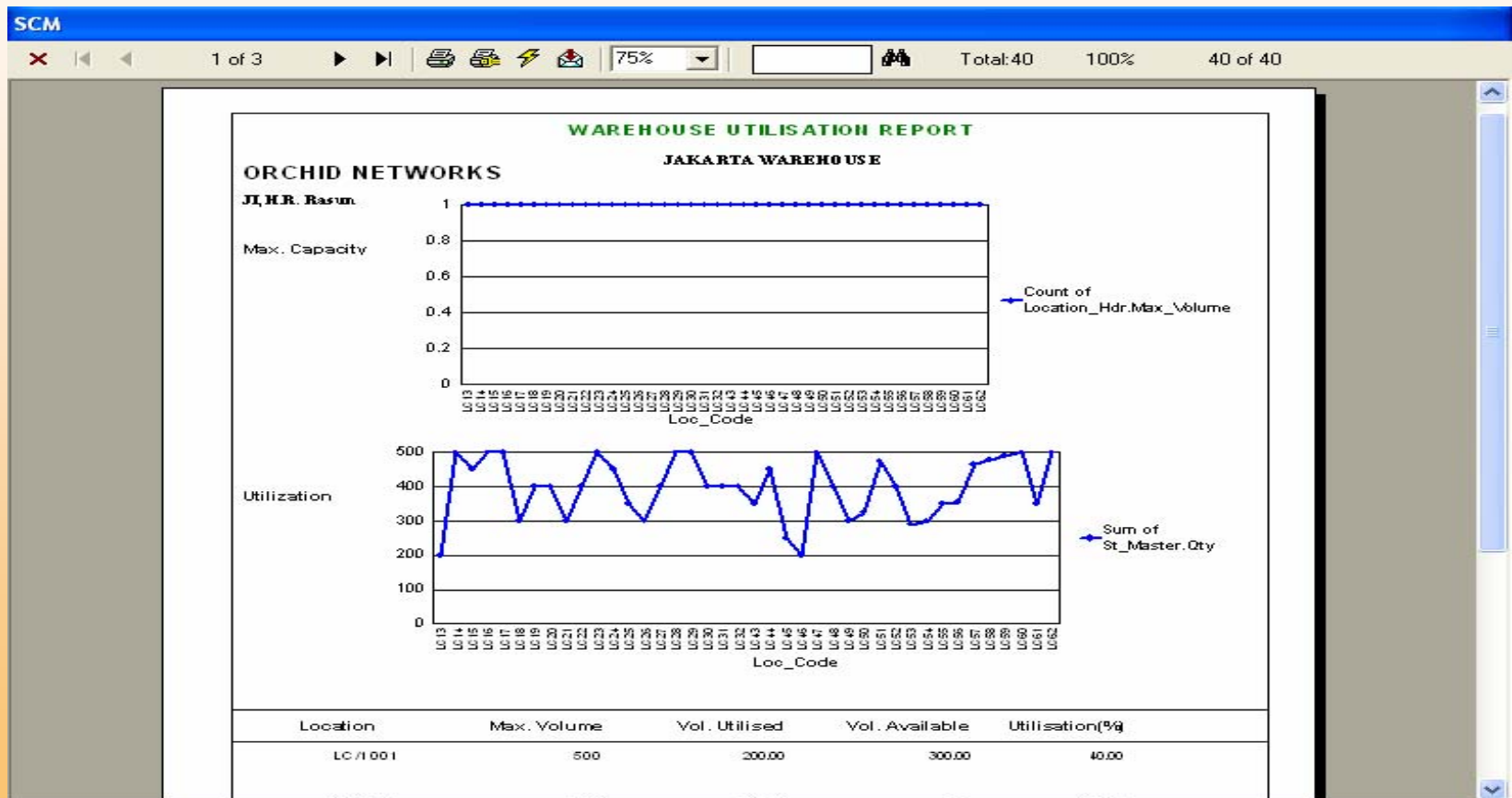


Stock Status Report





Warehouse Utilization Report





TrackWare® SCM Suite

AI Soft Technologies Pvt. Ltd.

Head Office

'AI Soft House', #6 Church Road
Basavangudi , Bangalore 560 004, India

Email : aisoft@vsnl.com

Tel : +91(80) 6577410, 6573026

Fax : +91(80) 2275604



Thank you